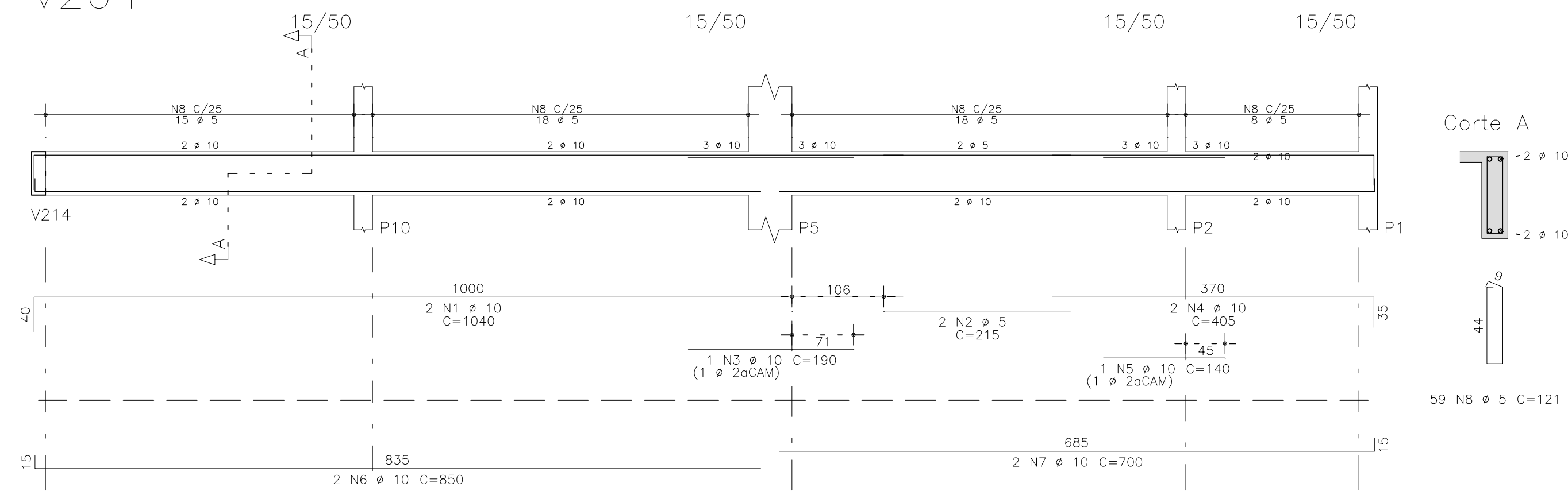
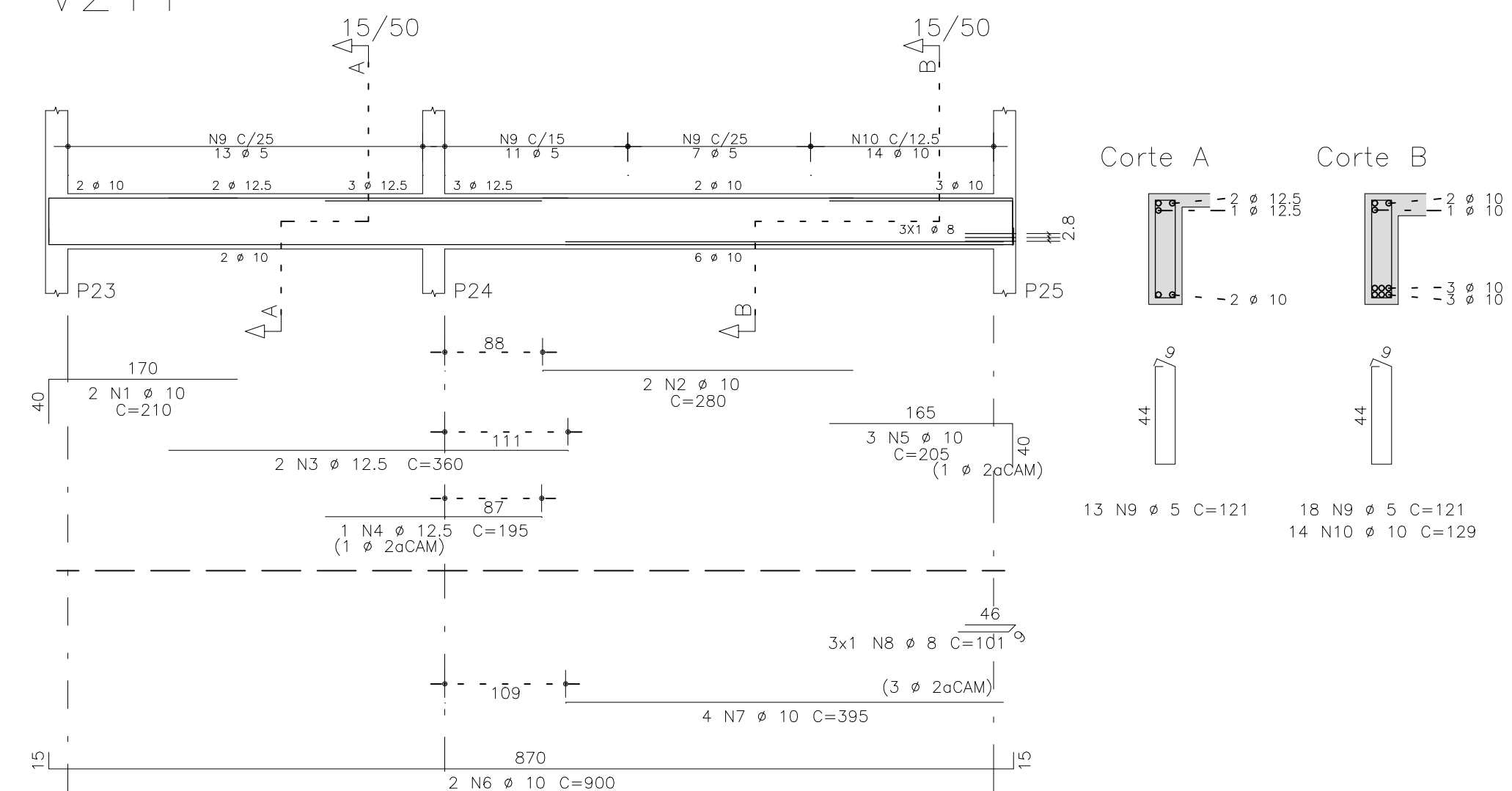


V204



V211



	AÇO	POS	BIT (mm)	QUANT	COMPROMETIDO	
					UNIT (cm)	TOTAL (cm)
V202						
	50A	1	10	3	275	825
	50A	2	12,5	3	570	1710
	50A	3	12,5	3	255	765
	50A	4	10	3	270	810
	50A	5	10	2	460	900
	50A	6	10	2	245	490
	50A	7	10	2	440	880
	60B	8	16	5	131	2096
	50A	9	6,3	33	132	4356

V204	50A	1	10	2	1040	2080
	60B	2	5	2	215	430
	50A	3	10	1	190	190
	50A	4	10	2	405	810
	50A	5	10	1	140	140
	50A	6	10	2	850	1700
	50A	7	10	2	700	1400
	60B	8	5	59	121	7139

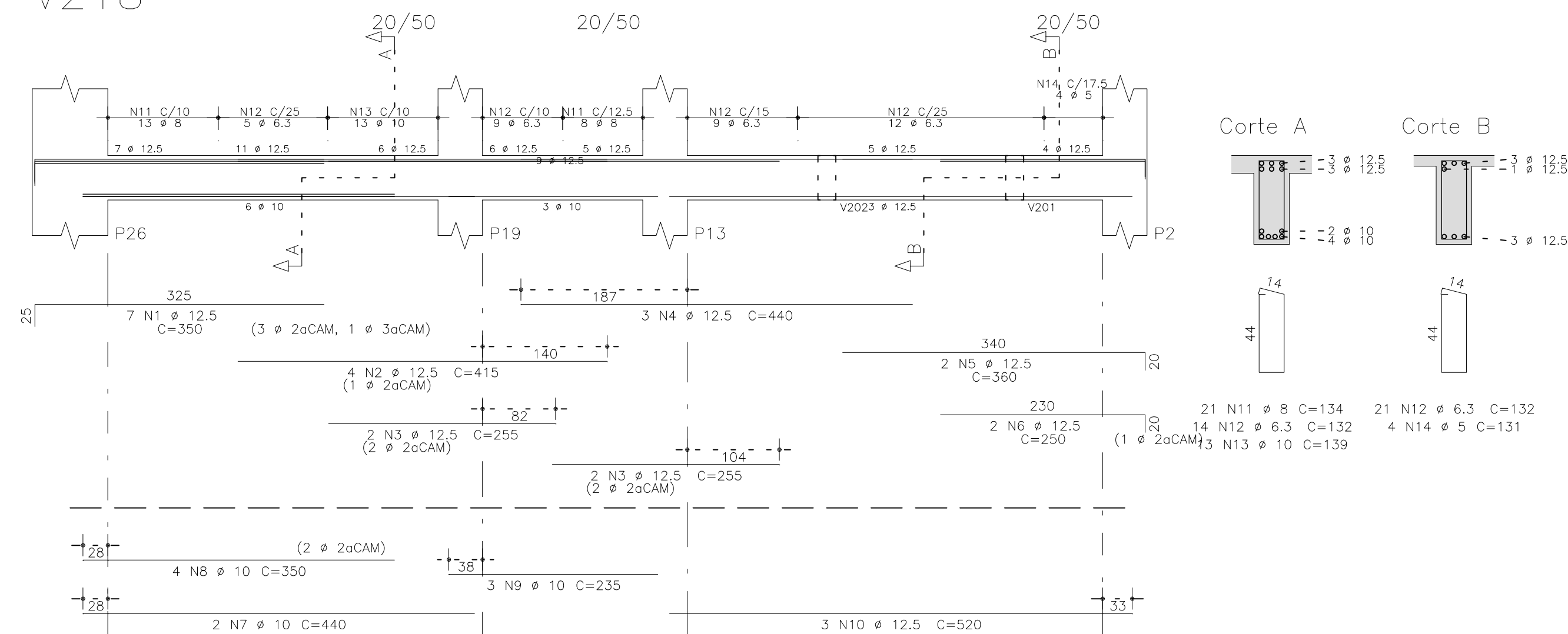
V211	50A	1	10	2	210	420
	50A	2	10	2	280	560
	50A	3	12.5	2	360	720
	50A	4	12.5	1	195	95
	50A	5	10	3	205	615
	50A	6	10	2	900	1800
	50A	7	10	4	395	1580
	50A	8	8	3	101	303
	60B	9	5	31	121	3751
	50A	10	10	14	129	1806

V212	50A	1	6.3	2	320	640
	50A	2	10	3	190	570
	50A	3	6.3	2	385	770
	50A	4	16	2	445	890
	50A	5	16	2	235	470
	50A	6	10	3	170	510
	50A	7	10	2	690	1360
	50A	8	10	1	305	305
	50A	9	16	2	700	1400
	60B	10	5	33	131	4323
	50A	11	6.3	42	132	5544

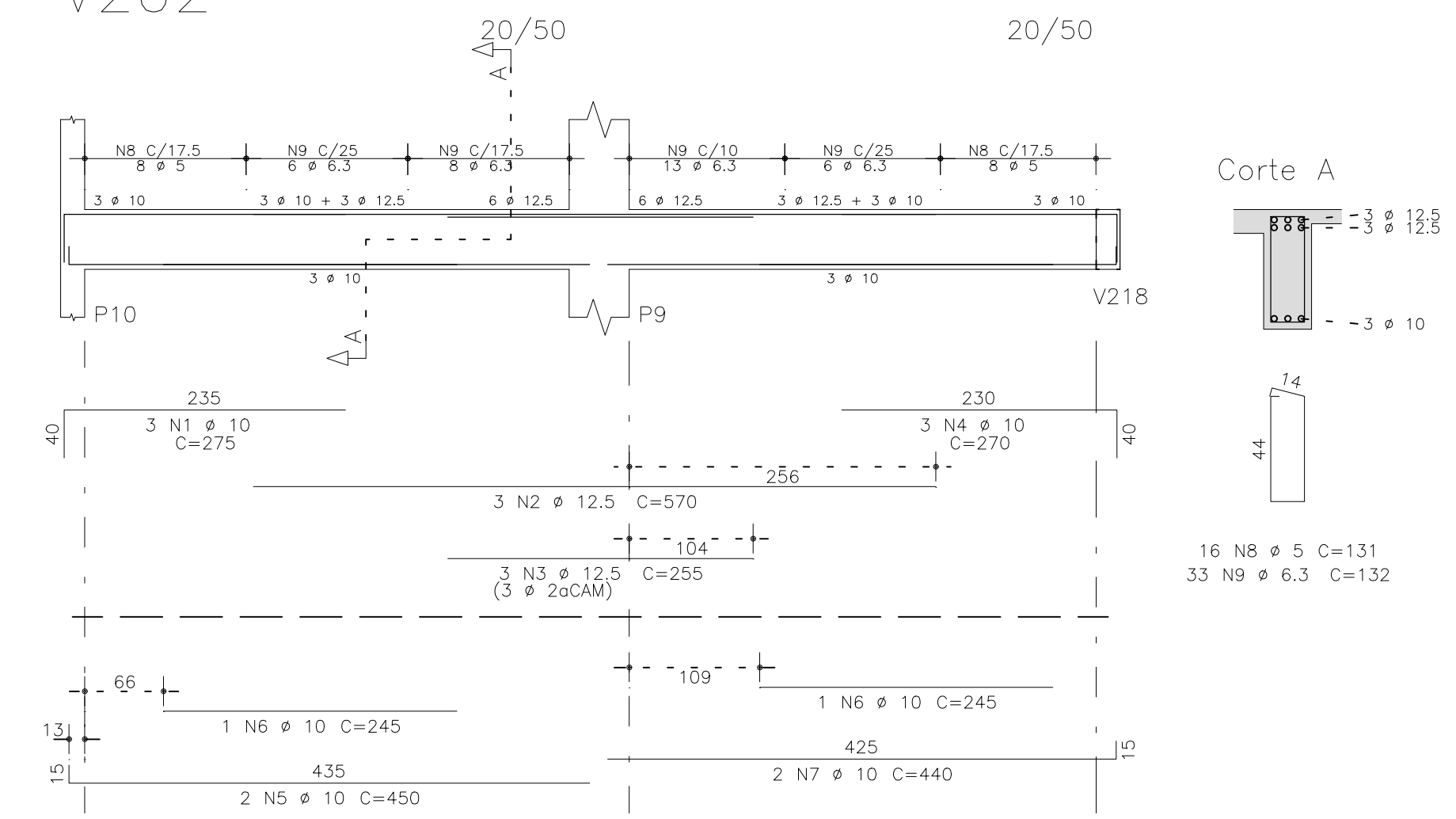
VZ14	50A	1	12.5	3	285	855
	50A	2	12.5	5	250	1250
	50A	3	10	2	295	590
	50A	4	10	2	205	410
	50A	5	10	2	695	1390
	50A	6	10	2	345	690
	60B	7	5	26	121	3146
	50A	8	6.3	3	122	366
	60B	9	5	4	616	2464

50A	1	12.5	7	350	2450
50A	2	12.5	4	415	1660
50A	3	12.5	4	255	1020
50A	4	12.5	3	440	1320
50A	5	12.5	2	360	720
50A	6	12.5	2	250	500
50A	7	10	2	440	880
50A	8	10	4	350	1400
50A	9	10	3	235	705
50A	10	12.5	3	520	1560
50A	11	8	21	134	2814
50A	12	6.3	35	132	4620
50A	13	10	13	139	1807
60B	14	5	4	131	524

V218

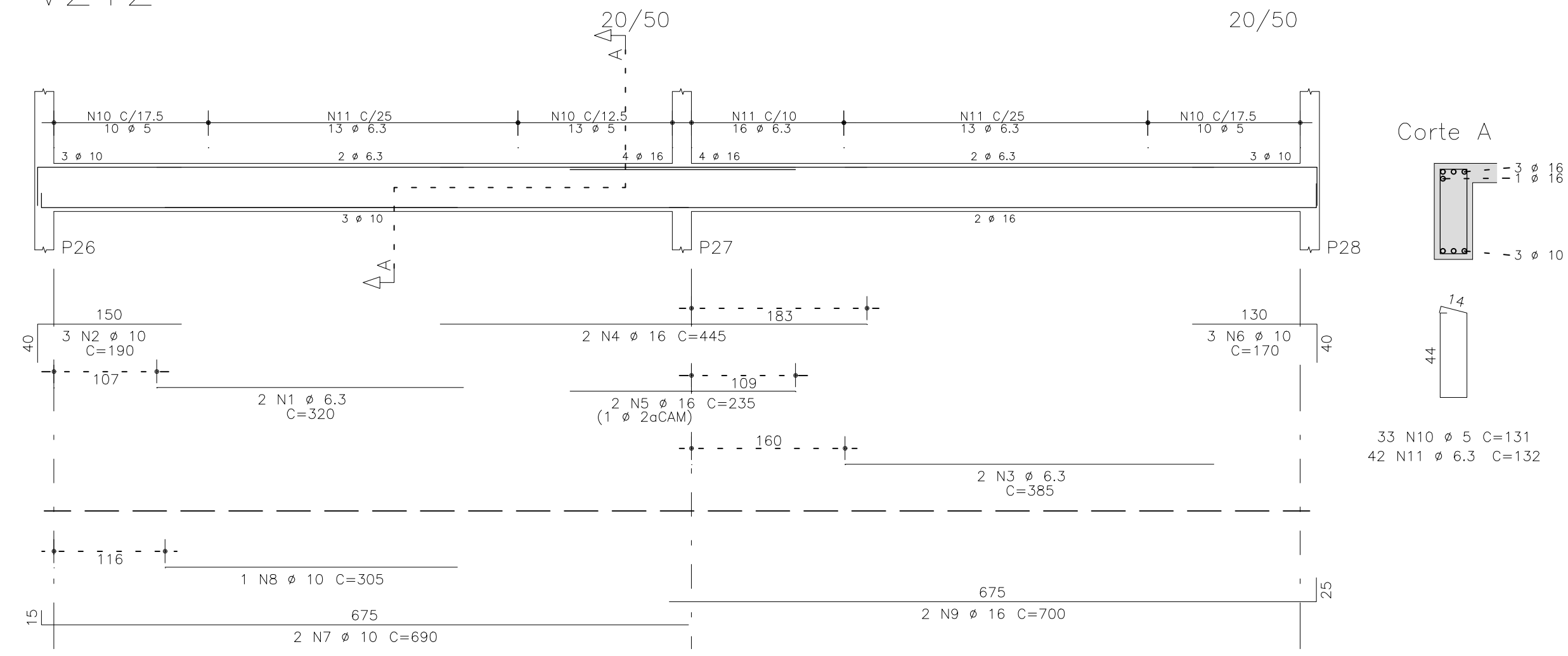


V202

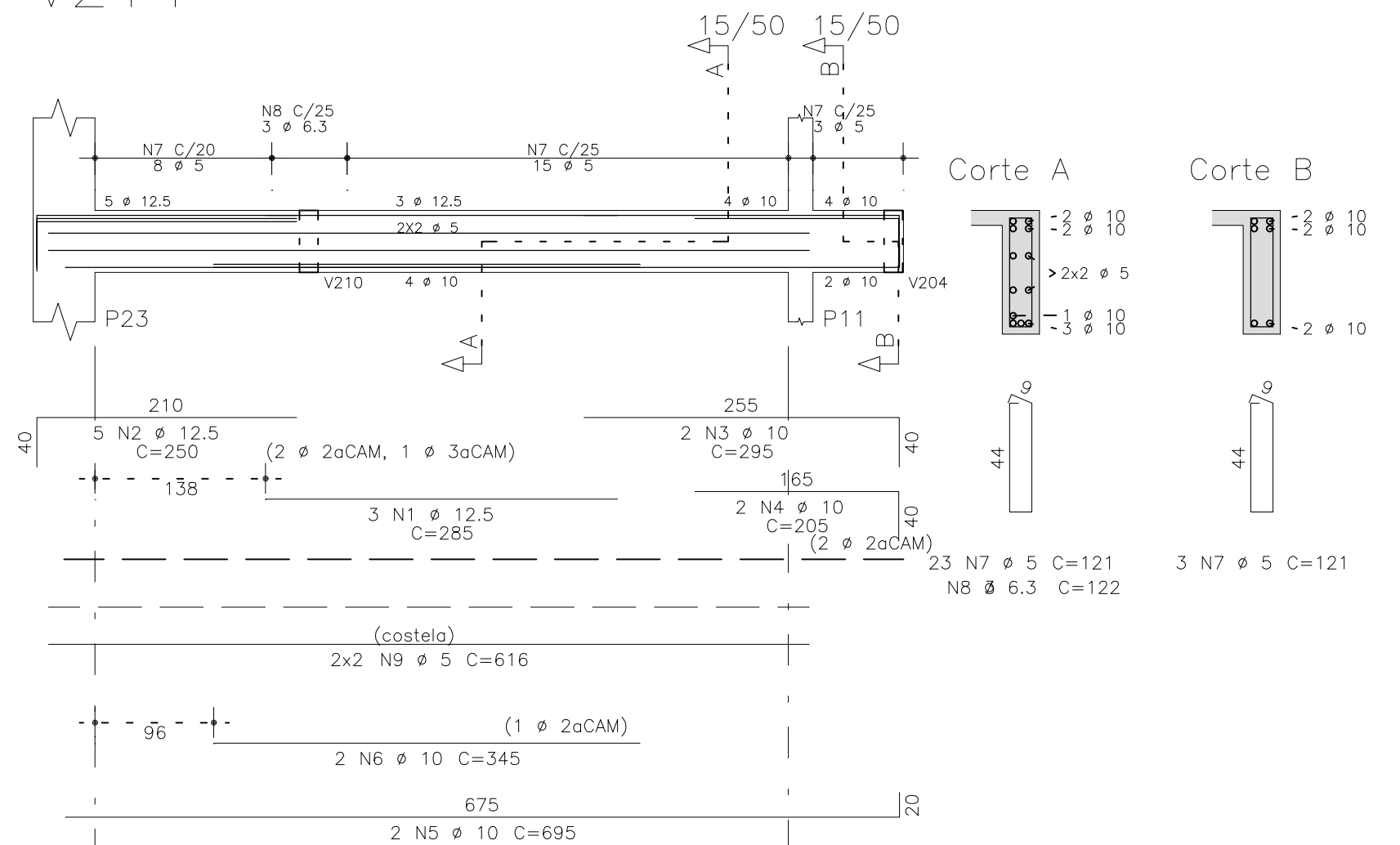


RESUMO AÇO CA 50-60			
AÇO	BIT (mm)	COMO CA (m)	PESO (kg)
60B	5	239	37
50A	6,3	163	40
50A	8	31	12
50A	10	276	171
50A	12,5	147	142
50A	16	28	44
Peso Total	60B =		37 kg
Peso Total	50A =		408 kg

V212


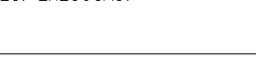



V214



O acesso ao Modelo Estrutural em dimensão pode ser executado pelo QR CODE ao lado, podendo acessar via celulares, tablets e quaisquer outros dispositivos.



		<h1 style="text-align: center;">Schuring & Schuring Ltda.</h1> <p style="text-align: center;">Escritório Técnico B.E.SCHURING – Projetos de Engenharia Av. XV de Novembro, 489 – Porto 2o. Andar – Cuiabá MT Fone:(065) 321 9959 – Fax:(065) 623 5066 – Email – schuring@terra.com.br</p>			
		<p>Schuring & Schuring</p>			
PROJETO ESTRUTURAL	PROJETO:	PROPRIETARIO: PREFEITURA MUNICIPAL VARZEA GRANDE	OBRA: PREVIVAG		
		RESP. TEC. EXECUCAO: 	END.: Av. Presidente Arthur Bernardes, s/n – Bairro IPASE VARZEA GRANDE MT		
	AUTORES DO PROJETO:  <p style="text-align: center;"> <u>Andre Luiz Schuring</u> Eng.Civil – CREA 5697/D—MT </p>		ASSUNTO: PAV SUPERIOR DET ARM VIGAS		
			PECAS DETALHADAS V202 / V204 / V211 / V212 / V214 / V218		
			FOLHA:	DATA:	FOLHA No.
		ESCALA: 1:50	DIRETOR AUTOMATICO RESERVADOS REPRODUCAO MEIOSA NA OBRA	29/11/2019	15
		ARQUIVO:			